



#myjobishumans

Thinking about working in the Aged Care Sector?

Working in aged care is a **caring, impactful career choice** that involves working with elderly populations to offer them support.

Did you know?

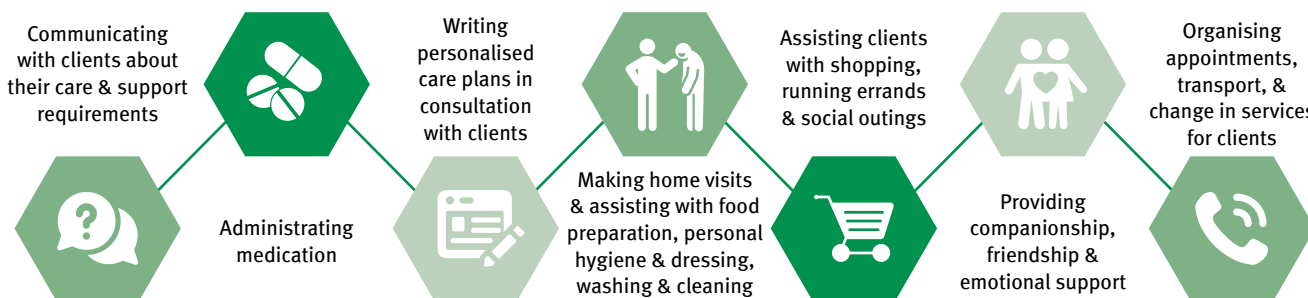
Aboriginal and Torres Strait Islander, people with a culturally and linguistically diverse background and males are needed in the sector

What is an Aged Care Support Worker?

Aged Care Workers provide support to elderly people by assisting with daily activities including eating, showering, dressing and cleaning. You will need soft and technical skills in this sector. Your skills and passion will see you making a momentous difference to the wellbeing, happiness and livelihoods of many elderly Australians.

Working in a clients own home to support and care for them is call HOME CARE.
Providing care and support in a residential aged care facility is call RESIDENTIAL CARE.

What does the job involve?



Licences and regulatory requirements?

- ✓ Blue card
- ✓ NDIS Workers Screening Check
- ✓ Police Check (or Criminal History Check)
- ✓ First Aid Certificate & CPR
- ✓ Vaccinations

*Organisations' requirements may vary

Skills

Soft	Technical
Compassion	First Aid Skills
Responsibility	Hygiene knowledge
Relationship-building	General health knowledge
Patience	Safe lifting and OHS
Adaptability	Legal and ethical knowledge

How do I get into Aged Care?

You can start a career in aged care through a school-based traineeship in a business support role or directly into an aged care support position. (Post school traineeships and free training for Year 12 graduates may be available).

Entry via an ATAR pathway may include completing a Certificate III in Individual Support or Certificate III in Community Services that could lead to occupations such as Nursing or Allied Health Professionals (refer to our Career Pathways Map).